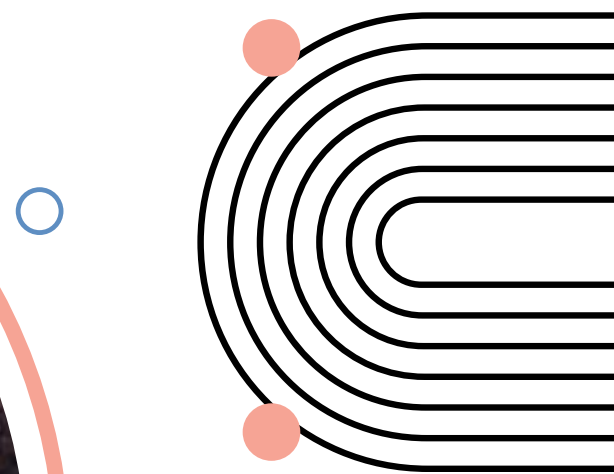


EmpowerED - Competence Evaluation Master Course

INFO-PACK

2023-1-RO01-KA151-YOU- 000127652



02- 10 June
2024

Ramnicu Valcea - Romania

ABOUT

YOUTH ON THE MOVE learning for all



We, at Youth on the Move Romania believe that learning never stops. Creating educational environments using non-formal education has been our mission since 2014. We take pride in our work, experience and dedication and our ability to deliver meaningful education in multicultural groups.

This Training Course is part of our **Erasmus Plus Youth Accreditation - year 3** and its main goal is to give organisations and youth workers competencies and tools designed to facilitate a genuine evaluation of learning results within youth projects such as youth exchanges.

How do we know if our participants learned something?



That is one of the most frequent question that trainers, facilitators and program designers are asking at the end of an educational program. There are many strategies out there, but most of them seem to be non-effective in real life.

How can we evaluate learning results? How can we promote and facilitate self-evaluation? What is a reflection space? How can we design learning activities with a self-evaluation feature? If at least one of this questions went trough your mind during your sessions, than this training course is definitely for you.

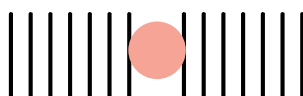
COMPETENCE ENHANCEMENT

for a group of maximum 35 trainers/youth workers/professionals in the field of youth. The program will be focused on both the reflection on own self evaluation processes and the skills needed to evaluate others.

DESIGN OF LEARNING ENVIRONMENTS

the participants will explore various design strategies in order to include learning evaluation, self-evaluation and recognition of learning results in all learning methodologies.

OBJECTIVES



MOBILITY DATES

01 June - Arrival - Travel Day

02 - 10 June 2024

11 June Departure - Travel Day



PROFILE OF PARTICIPANTS

We are looking for **youth workers, volunteers and professionals in the field of both formal and non-formal education**. We would be happy to host decision makers, project creators and staff with a direct role in educational program design.

Minimum requirements

- Must be over 18 years old
- Member/volunteer/staff or affiliated to an NGO with valid OID number

OUR PROJECT

VENUE CITY



RAMNICU VALCEA



The event will be held in Ramnicu Valcea, the capital city of Valcea County, situated in South-Central Romania. The city is easily accessible by road and railway from all major Romanian air hubs. If you are using air transport as your mean of reaching Romania we recommend Bucharest Otopeni Airport as the most easy route. Ramnicu Valcea is a 2,5 h bus/car drive from Bucharest. Please see the next page for transfer options.

ACCOMODATION

You will be hosted at Pensiunea Bulevard, a 3 star hotel that is located 20 min away from the city center by walk, and is accesibile by foot and/or car. The exact location is B-dul. Tudor Vladimirescu 43, Râmnicu Vâlcea.

The participants will be accomodated in rooms of 2.

The food will be delivered by a local catering company, all the participants will contribute to washing the dishes.

Accommodation will be open on 01 June 2024 starting with 16.00 and will finish on 11 June 2024 at 12.00. You will be hosted in double rooms, gender separated. Towels and basic toiletry will be provided by the hotel. Link to the hotels website here: <https://www.pensiunebulevard.ro/>

LOGISTICS



LOGISTISC

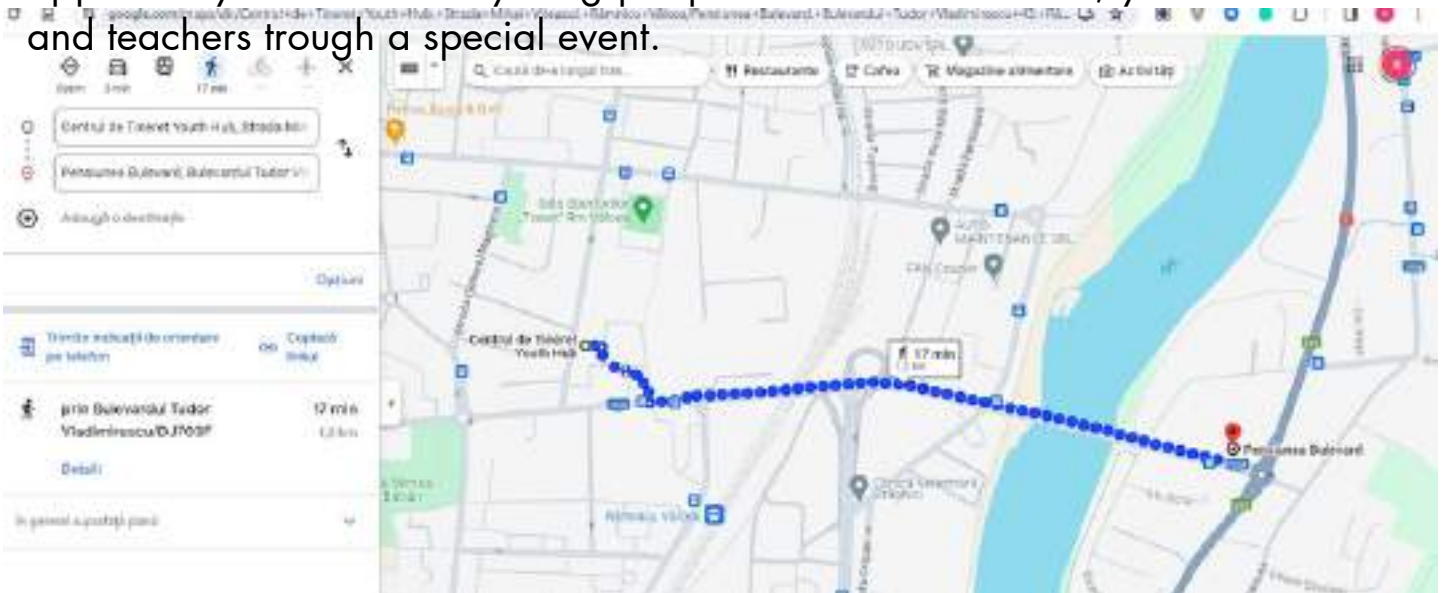


VENUE OF ACTIVITIES - YOUTH HUB

All the learning activities will be held in Youth Hub, our youth center that is 17 minutes walk from the accommodation. While all the meals and informal events will be held in the hotel, all the non-formal activities will be held here. We opted for this venue because of many reasons, but the most important is that is a nice, cozy place of work, reflection and discussion, close to the city

center. It is a main hub for youth activities in the city and will also give us the

opportunity to meet both young people but also educators, youth workers and teachers through a special event.



Flying to Bucharest - Otopeni airport (Henri Coanda)

- **Direct transfer** from the airport to Ramnicu Valcea - You can chose this option that is fast and comfortable but you need to book in advance. Here is the website where you can find all the regular transfers and booking: <https://www.autogari.ro/Transport/Otopeni-RamnicuValcea?zi=2023-06-19&pas=1-0-0-0-0&lang=en>
- **Airport - Gara de Nord - Autogara Militari - Ramnicu Valcea**
This option is good if you would like to visit Bucharest or do not have any other options for direct transfers. Here is the step by step process:

1st Step - from the Airport - Arrivals Terminal take the direct train to Gara de Nord - Bucharest - Note that this train departs every 45 minute from the airport, is available 24 h and takes 25 minutes to get to Bucharest. The price for one ticket is 5 lei (1 euro) - buy the tickets directly in the train, at the airport CFR counter or online. (<https://www.cfrcalatori.ro/>)

2nd step - once arrived in Gara de Nord - take the Metro from Gara de Nord 1 - Metro station - LINE M1 - direction Pantelimon/Republica, change in Eroilor station to LINE M3 - direction Preciziei . Your stop will be Pacii Station. The price of a 2 way metro is 6 lei (1, 2 euro).

Resulting route for Gara de Nord 1 - Pacii



DEPART FROM GARA DE NORD 1

- 1) BASARAB 1
- 2) CRANGASI
- 3) PETRACHE POEMARU
- 4) GROZAVESTI

CHANGE TRAIN AT 5) EROILOR BUS M1 >> M3

- 6) POLITEHNICA
- 7) LUERULUI
- 8) GORJULUI

ARRIVAL AT 9) PACII

LOGISTISC

HOW TO GET HERE



Flying to Bucharest - Otopeni airport (Henri Coanda)

3 rd step - At Pacii Metro Station go above ground - cross the street and go to Autogara Militari. There are regular busses that connect Bucharest with Ramnicu Valcea. Please consult the website below for the program and reservations. You can either buy online or buy directly from the driver. The cost of a bus ticket varies between 40 - 60 lei (9 - 12 euros).

website here: <https://www.autogari.ro/Bus/Bucuresti-RamnicuValcea?zi=2023-06-19&pas=1-0-0-0-0>

Please let us know your choice of transport and arrival hours at least 2 days before the event. For night arrivals let us know so we can arrange private transfers.

Flying to other airports

You might have the options to fly in to Craiova International Airport or Sibiu International Airport. Please let us know so we can advise and eventually arrange transfers for you.

By car

If you are planning to use a car to arrive at the venue this is the address of the Hotel: Ramnicu Valcea, B-dul. Tudor Vladimirescu 43.

Save your travel papers

Regardless of your mean of transport please save all your travel documents for reimbursement purposes. Boarding Pass is a must in order to fully reimburse you.

LOGISTISC

REIMBURSMENTS



Your travel cost will be covered by the project budget in a certain maximum amounts. The EU is encouraging the use of green means of transport (train, bus, carpool) and the budget for this type of travel is higher. Of-course use this type of transport when available and efficient.

The reimbursement will be made once the survey for trainers is summited by the participants and all the documents are checked by our financial department. This could take up to 3 weeks after the mobility.

Bellow you have the rates according to your distance band.

Travel	Contribution to the travel costs of participants, including trainers, accompanying persons and facilitators, from their place of origin to the venue of the activity and return. Financing mechanism: contribution to unit costs. Rule of allocation: based on the travel distance and number of persons. The applicant must indicate the distance between the place of origin and the venue of the activity ¹⁰¹ by using the distance calculator supported by the European Commission ¹⁰² . For itinerant activities, the applicant should add up the distances between individual venues and choose the distance band corresponding to the total. ¹⁰³	Travel distance	Standard travel
		10 – 99 km	23 EUR
		100 – 499 km	180 EUR
		500 – 1999 km	275 EUR
		2000 – 2999 km	360 EUR
		3000 – 3999 km	530 EUR
		4000 – 7999 km	820 EUR
		8000 km or more	1500 EUR

Distance band calculator

You can find your distance band using this EC calculator : <https://erasmus-plus.ec.europa.eu/resources-and-tools/distance-calculator>

Green Travel reimbursements

Please note that green travel rates will be applied only to participants that can demonstrate that they've used a green mean of transport at least half of their travel band.

CONTACT



AND SIGN UP

To start your selection process please sign up to this link and you will be contacted by a member of our organization.

IMPORTANT

If this Info-pack have been presented to you by your sending organization ***please contact your coordinator for sign up.***

MORE PROJECTS

Explore the world and learn together with the help of Tavo Europa. Join the group with more opportunities: <https://www.facebook.com/groups/186132221744993>

THE LEARNING PASS 2024

You are welcome to join our new educational programme for 2024! Dive into non-formal learning exploration for a 50 euro fee that will unlock your potential to join all training courses, learning teaching training activities in Lithuania and abroad until the end of the year! Please do not pay any fee until you receive a confirmation letter to join the programme. If you want to join the project, please fill the application form, whether you have already participated or not. Bear in mind that Tavo Europa keeps the right to send most suitable and motivated participants to all of our projects.