



Co-funded by
the European Union



Jaunatnes starptautisko
programmu aģentūra



TRAINING COURSE

LEARNING TO LEARN NFE

BALVI, LATVIA

06.08 – 11.08 2024

PARTNERS

LATVIA - RAIBAIS KAKIS

ROMANIA - ASOCIATIA DAR DEVELOPMENT ASSOCIATION

LITHUANIA - ASOCIACIJA TAVO EUROPA

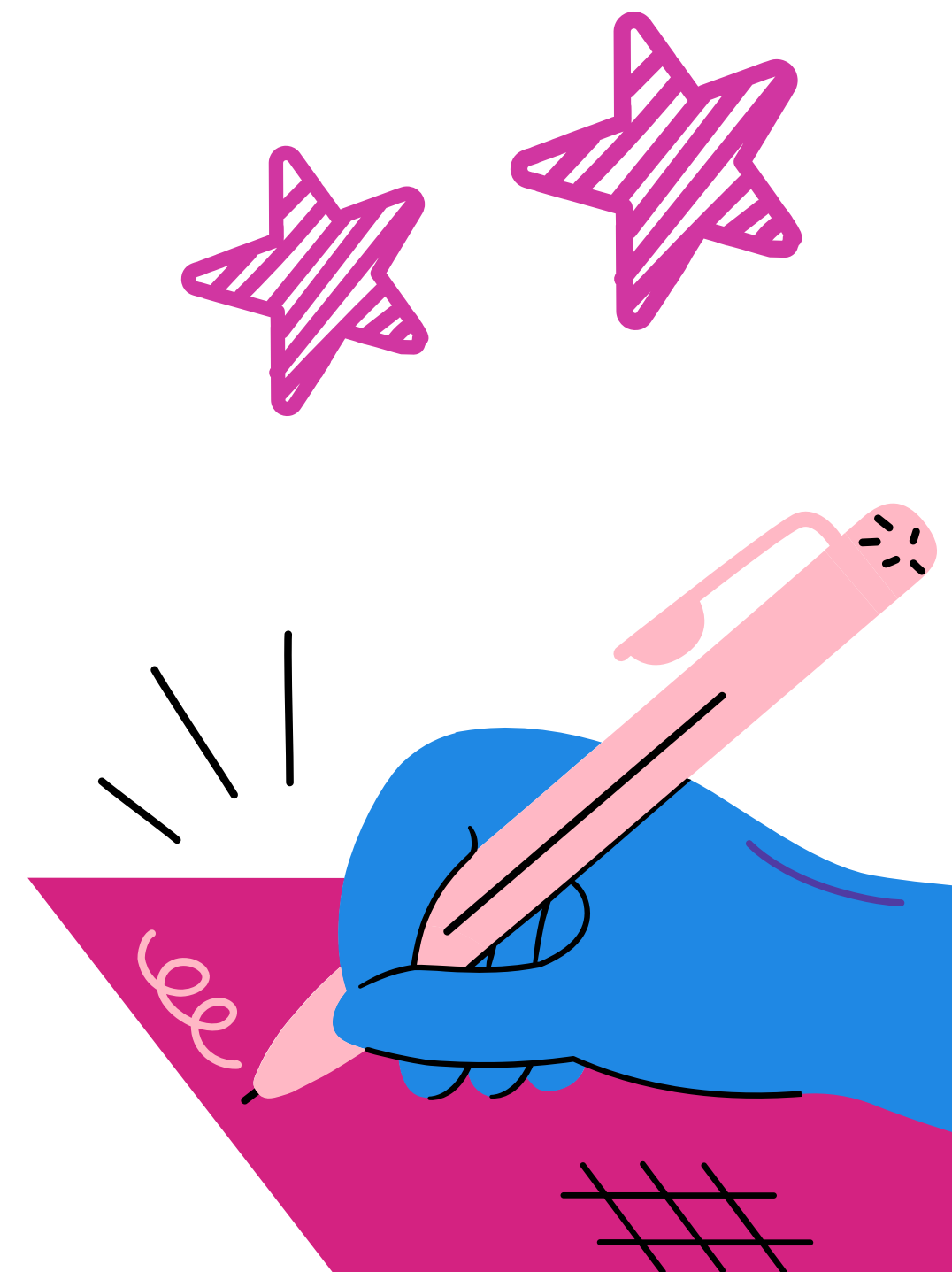
ITALY - ASD SPORT COMPASS

GREECE - SOLIDARITY MISSION CIVIL NON PROFIT COMPANY

TÜRKIYE - ADANA INNOVATION AND ACTIVE YOUTH ACADEMY

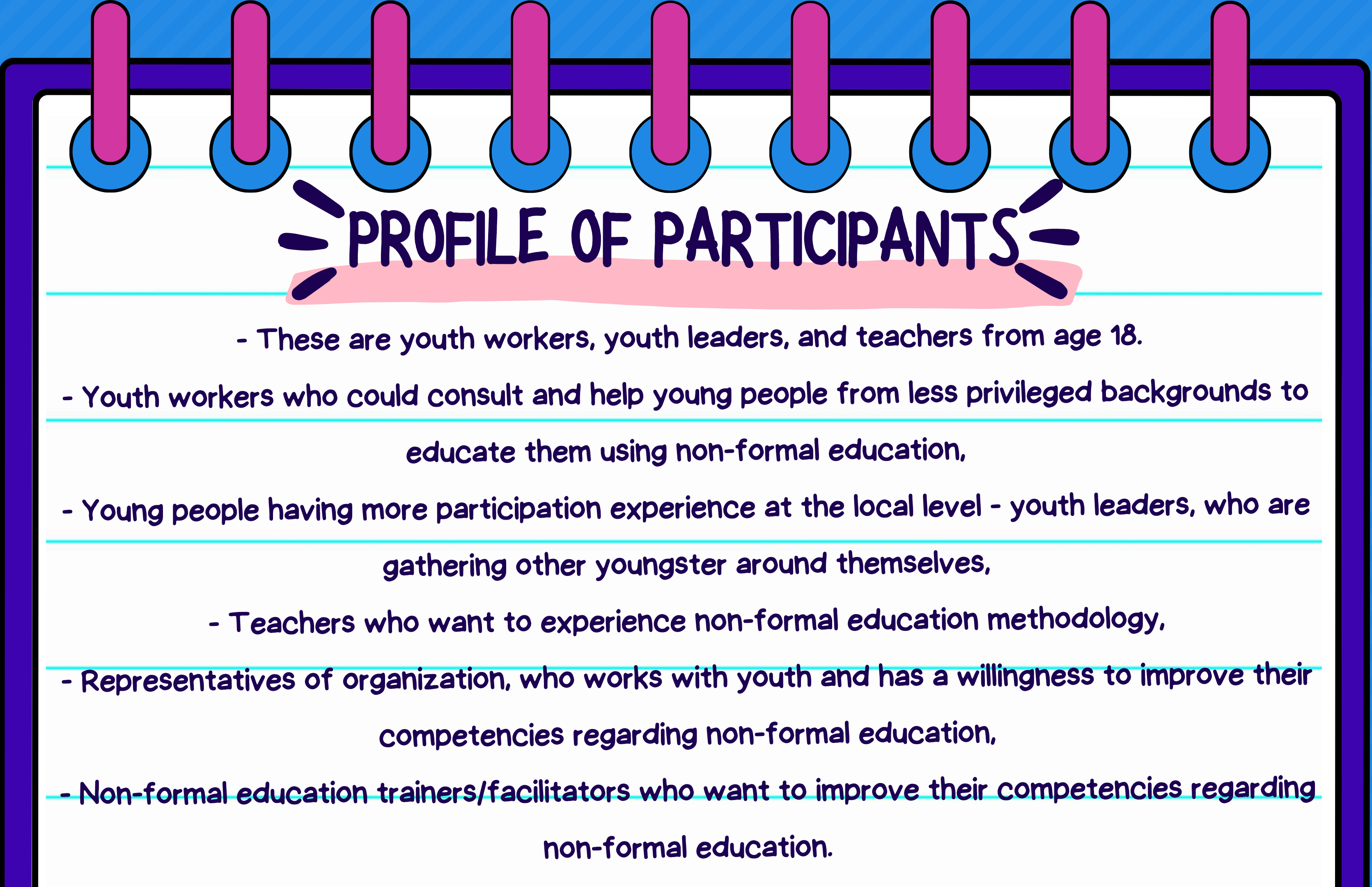
REPUBLIC OF NORTH MACEDONIA - SHKOLLA FILLORE KOMUNALE IMRI ELEZI SHKUP CAIR

21 PARTICIPANTS (3 PARTICIPANTS PER COUNTRY)



OBJECTIVES OF THE PROJECT!

- To stimulate the participants to reflect on Non-Formal Education by experimenting with different kinds of non-formal educational methods
- To understand the principles, theories, and practices of Non-Formal Education within the Erasmus+ program and how this can be used as an effective toolbox
- Improve participants' ETS competencies to work internationally

A graphic of a spiral-bound notebook with a purple cover and a white page. The spiral binding is on the left side, with pink rings and blue circles. The page has horizontal cyan lines. The title 'PROFILE OF PARTICIPANTS' is written in a bold, dark blue, hand-drawn font, centered on the page and underlined with a pink brushstroke. There are several dark blue lines radiating from the title, suggesting emphasis or a spotlight effect.

PROFILE OF PARTICIPANTS

- These are youth workers, youth leaders, and teachers from age 18.
- Youth workers who could consult and help young people from less privileged backgrounds to educate them using non-formal education,
- Young people having more participation experience at the local level - youth leaders, who are gathering other youngsters around themselves,
- Teachers who want to experience non-formal education methodology,
- Representatives of organization, who works with youth and has a willingness to improve their competencies regarding non-formal education,
- Non-formal education trainers/facilitators who want to improve their competencies regarding non-formal education.

RESPONSIBILITIES OF PARTICIPANTS

- PARTICIPATE IN PREPARATION MEETING ORGANISED BY SENDING ORGANISATION,
PREPARE HOME WORK SUPPORTED BY SENDING ORGANISATION,
- PARTICIPATE IN PRE-DEPARTURE MEETING ORGANISED BY HOSTING ORGANISATION
22.07.2024 AT 17:00 (EET TIME ZONE, LATVIAN TIME),
- FULLY PARTICIPATE IN ALL TRAINING COURSE ACTIVITIES,
- SHARING INFORMATION ABOUT PROJECT DURING AND AFTER TRAINING COURSE
(MINIMUM ONE),
- SHARING COMPETENCE GAINED DURING TRAINING COURSE BY IMPLEMENTING
ACTIVITY WITH OTHER YOUTH WORKERS OR YOUTH (MINIMUM ONE).

ACCOMODATION AND FOOD

During activity starting from 05.08.2024
evening (dinner) till 12.08.2024

morning (breakfast) food and accommodation
expenses are covered from project (each day

one of the meal is planned to be vegetarian)

Accommodation you will stay 2 - 3 people in
room, picture you can see here

(<https://bvginternats.mozello.lv/gallery/>)

address Dārza street 2, Balvi

(<https://goo.gl/maps/xMdGMwdYHLoKYSESA>).



Accommodation



TRAVEL



Travel Latvia has one main airport Riga airport, search for flight to Riga airport.

- Do not buy tickets before your sending organisation is giving you GREEN light
- You must arrive to Riga 05.08.2024 before 17:00 and keep in mind that you need to have time to get from Riga airport to Bus station and to go with bus to BALVI; the last bus from Riga bus station to Balvi is at 18:55.
- You must departure starting from 12.08.2024 after 9:00; the first bus from Balvi arrives in Riga bus station at 6:50 in the morning.
- If you want to visit Riga, you can come two days before or leave Latvia two days after training activity, accommodation and food for extra days - it is your own expenses.

Travel costs will be reimbursed up to 100% if you manage your travel within the allocated budget, and upon the presentation of the tickets, invoices, and proofs of payment – regarding flight – invoice, confirmation e-mail from company and boarding pass. If you miss any documents you reimbursement will be not possible!

- Choose the cheapest way to travel; expenses of Taxi can't be covered by the fund.

TRAVEL BUDGET

LATVIA	23 EUR
LITHUANIA	180 EUR
ROMANIA	275 EUR
NORTH MACEDONIA	275 EUR
GREECE	360 EUR
ITALY	360 EUR
TÜRKIYE	360 EUR

PARTICIPATION FEE

YOURS TRAVEL INSURANCE IS
YOUR PARTICIPATION FEE
FOR TRAINING COURSE.

BALVI

Balvi municipality is located in the north-east of Latvia. Balvi municipality includes Balvi town (administrative centre) and 10 parishes. Municipality is rich of forests, rivers and lakes and agricultural land. Using these resources the main business of municipality are agriculture, logging and wood processing. Some households focus on the bee-keeping, fish farming and other non-traditional forms of agriculture.

Balvi municipality aware itself as an important north centre of Latgale, where ethnographic and nowadays cultural traditions have been maintained. Different artistic amateur collectives are working in the cultural institutions of Balvi municipalities. Also local, regional and state scale cultural events are held in the municipality.

More about Balvi and Balvu municipality you can find here <http://turisms.balvi.lv/en/>

Suggestion!!!

If you want to explore more Latvia for example our capital city Riga, you can come two days before or departure 2 days after project training days and stay for example in Riga. Extra days expenses accommodation and food you cover by yourself.



FOR MORE PROJECTS:

**EXPLORE THE WORLD AND LEARN TOGETHER
WITH THE HELP OF TAVO EUROPA.**

JOIN THE GROUP WITH MORE OPPORTUNITIES:

[HTTPS://WWW.FACEBOOK.COM/GROUPS/186132221744993](https://www.facebook.com/groups/186132221744993)

THE LEARNING PASS 2024

**YOU ARE WELCOME TO JOIN OUR NEW EDUCATIONAL PROGRAMME FOR
2024!**

**DIVE INTO NON-FORMAL LEARNING EXPLORATION FOR A 50 EURO FEE
THAT WILL UNLOCK YOUR POTENTIAL TO JOIN ALL TRAINING COURSES,
PROFESSIONAL STUDY VISITS, EVENTS IN LITHUANIA AND ABROAD UNTIL
THE END OF THE YEAR! PLEASE DO NOT PAY ANY FEE UNTIL YOU
RECEIVE A CONFIRMATION LETTER TO JOIN THE PROGRAMME. IF YOU
WANT TO JOIN THE PROJECT, PLEASE FILL THE APPLICATION FORM,
WHETHER YOU HAVE ALREADY PARTICIPATED OR NOT. BEAR IN MIND
THAT TAVO EUROPA KEEPS THE RIGHT TO SEND MOST SUITABLE AND
MOTIVATED PARTICIPANTS TO ALL OF OUR PROJECTS.**